



Rugged Vehicle Docks for Dell Latitude 14 Rugged Extreme / 7414

Tech Specs

These are just a few of the standard specifications. For more information and other options, please contact CTI.

Temperature MIL-STD-810F, Method 501.4 & 502.4

Operating -18° - +55° Celsius

Non Operating -30° - +70° Celsius

Drip Proof

MIL-STD-810F, Method 506.3

Humidity

MIL-STD-810F, Method 507.4

Vibration

MIL-STD-810F, Method 514.4-Cat. 8 (Tested for M-113)

Shock

MIL-STD-810F, Method 516-5, Proc. I - 40G 11ms, half sine

EMI/RFI

MIL-STD-461E

Ingress Protection Rating

IP65 Rated

Dimensions 11" H x 11.4" W x 4.5" D

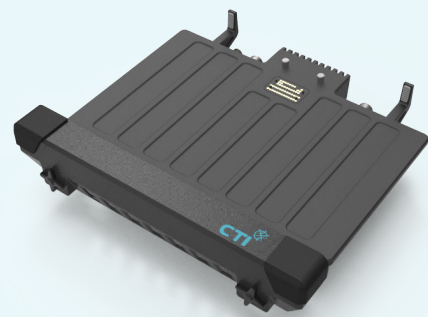
Weight 3.5 Kg.

Power Input 16-32vdc. MIL-STD-1275D

Standard Connections

Connector	Type	Function(s)
J1	MS3112E12-3PY	Power in (16 - 32vdc)
J2	804-07NF6-4SNB	USB2
J3	D38999/20WA35SN	LAN (100Mb)
J4	D38999/20WC35SN	VGA out
		RS-232 COM1
		RS-232 COM2
		USB2
J5	TNC	5vdc
		GPS Antenna

Other connectors and/or functions available upon request



USA

525 Northern Boulevard, Great Neck,
NY 11021 USA • Tel: 888-CTI-INTL (888-284-4685)
Fax: 516-487-5214
Email: info@cti-intl.com • www.cti-intl.com

ISRAEL

20 Hamagshimim St. POB 7252,
Petach Tikva 49250, Israel.
Tel: +972-3-921-1110 • Email: sales_il@cti-intl.com
Fax: +972-3-921-1130 • www.cti-intl.co.il

The CTI Rugged Vehicle Dock (RVD-MZ11-7414) for Dell Latitude 14 Rugged Extreme / 7414

When you need a Toughbook to tough out any environment, you need a rugged vehicle dock made to go the extra mile. Installed in any Military vehicle, your computer will run reliably, no matter the terrain or drive type (tracks or tires).

